



Dear Partners,

To start, I would like to extend my warm wishes for a joyful 2024 to you and your loved ones.

The new year presents a great opportunity for us to reaffirm our dedication to our clients and commitment to innovation in our industry.

In this first edition of the year, it is our pleasure to share some of our most recent employee benefit updates with you.

We will start by presenting our GLOBE@CCESS project, which aims to provide innovative solutions to the complex EB challenges faced by multinational companies today.

Then we will highlight the significance we attach to enhancing our teams through our recent recruitment effort within our French international EB team.

We look forward to solidifying our collaboration and sharing valuable moments at our upcoming meetings.

Axel Zoma
Head of International
Employee Benefits



DISCOVER GLOBE@CCESS, OUR NEW INTERNATIONAL EB SOLUTION

In response to the emerging challenges faced by multinationals, Verlingue is proposing an innovative solution specifically designed to meet the requirements of multinational groups top management teams.

Globe@ccess provides a global view of EB market status worldwide. The platform is intended to become an incremental visualisation tool, from high-level to deep dive analysis, covering all insured EB programs at a multi-country level.

Globe@ccess aims to be a decision-making tool to support multinationals operating and expanding abroad, by offering compliance and benchmarking visualization output.

The platform centralises all EB programs across the Group, using data uploaded directly by the relevant Verlingue teams.

Globe@ccess covers life, disability and health insurance programs, but the tool is intended to expand into a broader offering, including retirement in the next release.

Globe@ccess supports Group HR and Group C&B in their data-based decision-making and strategic choices regarding benefits design and optimization. The multinational pooling feature will be deployed in 2024, providing solutions to group financial directors and risk managers looking for budget optimization and global risk management.

The highly visual design allows client users to approach EB programs in a number of ways, making it easy to read the information, thanks to the mapped display. Its inverted funnel logic enables users to target data effectively, by country and/or by risk. In order to optimize the customer experience, feedback from current users is sought regularly.



INTERNATIONAL FRENCH EB TEAM

As part of our strategic focus to increase our international book of business and presence within the WBN, our Verlingue team has continuously expanded and strengthened its talent pool over the past two years. We are very pleased to welcome Heike Fiedler as Head of International EB Programs.

Heike has a significant experience in the international EB industry, having spent the past 15 years with a global broker as Head of multinational clients onboarding and management. Heike will be a great contributor to Verlingue and the WBN network by sharing her expertise of strategic program management from a commercial and technical point of view. Please join us in welcoming Heike to the WBN community !



Axel ZOMA

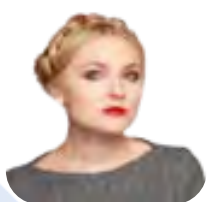
Director

International Employee Benefits Practice



Heike FIEDLER

Head of International EB Programs



Yanina BIELOUS

Consultant



Fanny TSCHANN

Consultant



Laure MANARANCHE

Consultant



Annabelle BAYLAC

Account Manager

KEY FIGURES

An insurance broker specialising in corporate protection, **Verlingue** provides its clients with simple and effective solutions to protect their business (corporate risks) and their staff members (employee benefits).

With offices in **France, Portugal, Switzerland, United Kingdom**, and most recently **Italy**, with the acquisition of a majority stake in INSER, Verlingue is now present in 5 countries. With partners in more than 100 countries, Verlingue advises, negotiates, and manages insurance programmes for corporate clients.

And one overriding customer service ambition: ***Protecting today, imagining tomorrow.***

5 countries - 1 350 employees
35 offices in France, UK, Switzerland, Portugal and Italy
2 350 M€ Premiums



LET'S MEET IN STOCKHOLM!

28 - 29 JANUARY, 2024



Axel ZOMA
Head of International –
Employee Benefits
axel.zoma@verlingue.fr



Jérôme LAVANDIER
Head of International - P&C
jerome.lavandier@verlingue.fr



Chrystelle DEAS
Manager of International
Programs
chrystelle.deas@verlingue.fr



Adolfo ALMAZO
Manager of Global
Programs & Networks
adolfo.almazo@verlingue.fr



Kenza AIT MESGHAT
International Account Handle
kenza.aitmesghat@verlingue.fr



Heïke FIEDLER
Employee Benefits Manager
heike.fiedler@verlingue.fr



Fanny TSCHANN
Employee Benefits Consultant
fanny.tschann@verlingue.fr



Laure MANARANCHE
Employee Benefits Consultant
laure.manaranche@verlingue.fr



Annabelle BAYLAC
Employee Benefits Analyst
annabelle.baylac@verlingue.fr



Marco BUHOLZER
CEO / Board of Directors
marco.buholzer@verlingue.ch



Teresa KNECHT-BAGNATO
Employee Benefits Specialist
teresa.knecht@verlingue.ch



Marco HOFSTETTER
Head of Pension
marco.hofstetter@verlingue.ch

LET'S MEET IN STOCKHOLM!

28 - 29 JANUARY, 2024



Linus FUCHS
Head of International / also
Marine Insurance Expert
linus.fuchs@verlingue.ch



Mike LATHAM
CEO
mike.latham@verlingue.co.uk



Anthony Horton
Director, Corporate &
Multinational
anthony.horton@verlingue.co.uk



Mark Pugh
Director - International &
Partnerships
mark.pugh@verlingue.co.uk



Phil Kelly
Client Executive
phil.kelly@verlingue.co.uk



Martyn Coates
Employee Benefits Consultant
martyn.coates@verlingue.co.uk